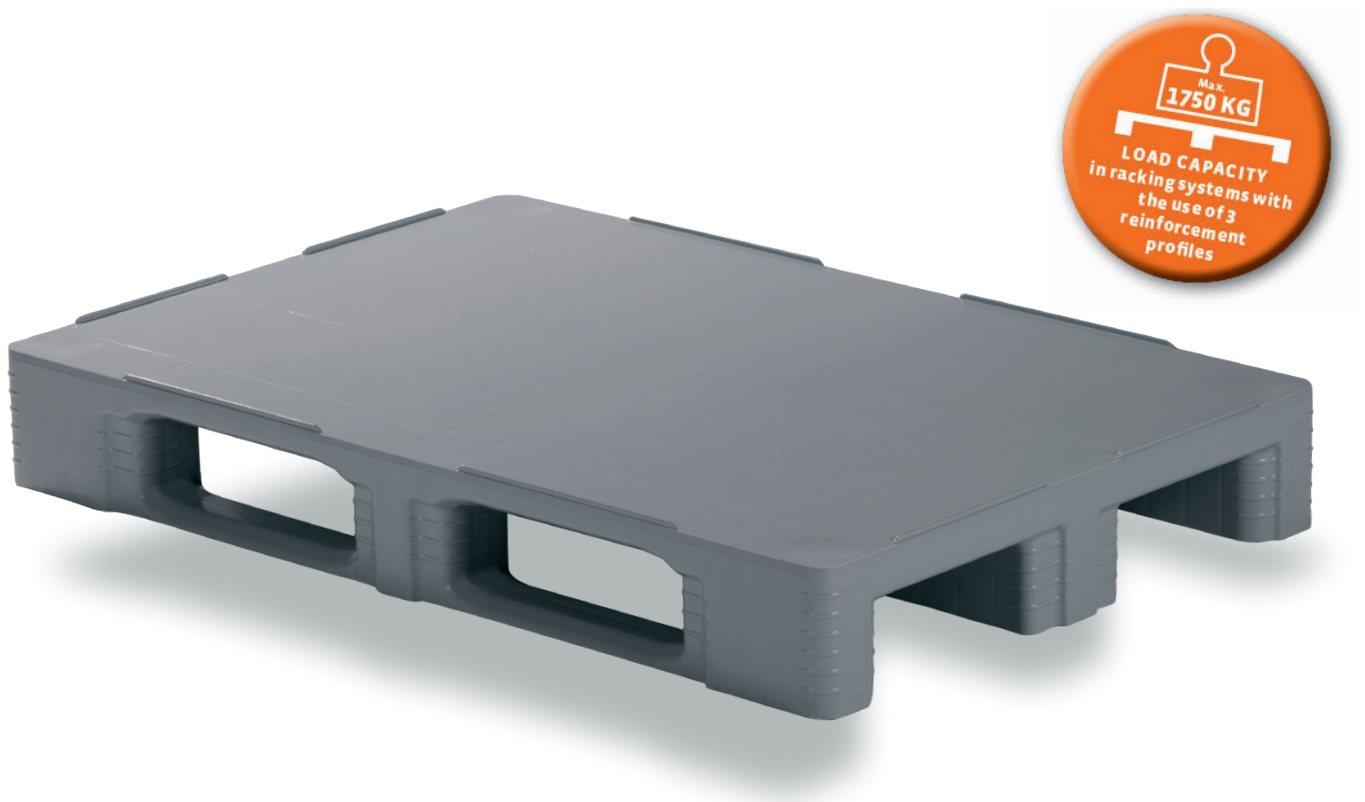


TC1

THE NEW FORCE IN THE CLOSED PALLET MARKET



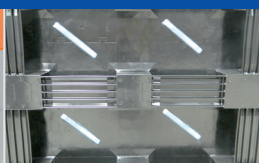
USE

The TC1 euro pallet takes quality in the closed pallet market to a completely new level. It boasts high shock resistance with a brandnew, patented welding geometry and is ideal for heavy duty loads. Being “Totally Closed”, contamination of this hygienic pallet is virtually impossible and it is therefore ideal for use as a cleanroom pallet in the pharmaceutical or food industry. This load carrier is compatible with all closed pallets of our competitors.

ONLY OPEN FOR INNOVATION.



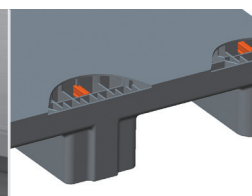
Optional with antislip topdeck



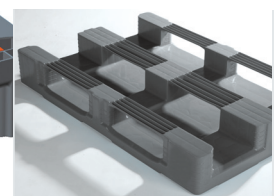
Customized production with antislip strips



7 mm antislip rims (optionally 22 mm)

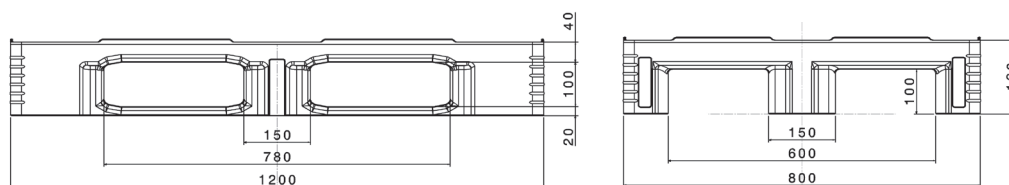


Optional with reinforcement profiles










completely closed

TC1



dimensions in mm

		DESCRIPTION								TECHNICAL DATA *1										
type	art. no.											material						load capacity*2 (load in kg)		
		3 runners, welded	3 runners, unwelded	5 runners, unwelded	antislip plugs	rim (hight in mm)	central box retainers	integrated reinforcement profiles	transponder (868 MHz)	dimensions (mm)	weight (kg)	HDPE	pp	virgin material	regranulated material	conductive	colour	static	dynamic	in racking system
TC1	87065881 					7			L: 1200 B: 800 H: 160	18						light grey	7500	1250	1000	
 Loading quantities (pcs) Approximate amount		20' container: 192 40' container: 390 40' high cube container: 440 Conventional trailer 45' high cube container: 510							 Loading quantities (pcs) Approximate amount		MEGA Trailer: 612 Jumbo: 684									
 Labelling options		Hot stamped letters, logos and numberings on request, depending on volume: on the foot of the 1200 mm sides, max. size 120 x 100 mm, number of 15 mm letters: 6 (3 linen), number of 30 mm letters: 4 (2 linen)																		

*1 All technical data include characteristic features, which have been tested under specially defined conditions. Varying data may result from different conditions of usage such as loading method, prevailing temperature and length of storage time. Our service team is pleased to be at your disposal to check the special requirements of your individual application.

*2 **Static load:** resistance to pressure on a flat ground surface and an evenly distributed load at a room temperature of approx. 20 °C.
Dynamic load: on a forklift with an evenly distributed load at a room temperature of approx. 20 °C.
In racking system: evenly distributed load along the longitudinal sides. Resting on two supports for over 100 h at a room temperature of approx. 20 °C.

*4 Readily available

Status as of 01/2013

CHARACTERISTICS

- Hygienic pallet with high resistance to damage
- High shock resistance thanks to solid wall thickness
- As a heavy duty pallet perfect for heavy duty loads
- Totally Closed – permanently completely closed plastic pallet
- Compatible with all standard closed deck plastic pallets of the same format
- Dimensionally stable in temperatures ranging from 40 °C to +70 °C

OPTIONAL

- Antislip surface
- With 22 mm rims or without rims
- Anti-slip stripes