



# Stackabox™

Universal Dispensing Container

A bulk packaging container system and dispensing solution for the injected preform, blown container and closure cap industry

**The Power of Less®**

## Contents

- Supply cycle savings	Pg 2
- Stackabox™ build sequence	Pg 3
- Stackabox™ features	Pg 4
- Dispensing systems	Pg 5
- Base dispense frame	Pg 6
- Top dispense frame	Pg 7
- Controlled top dispense frame	Pg 8
- Technical information	Pg 9





## Can you afford to waste money on...

### Inefficient use of production and warehouse space

- Storage containers that do not fold down or stack fail to optimise available floor space
- Purchasing additional warehousing / outsourced storage increases overhead costs

*It makes no sense to pay to store "fresh Air"*



### Production line contamination

- Cardboard boxes and conventional pallets contaminate the production line with debris, i.e. wooden splinters, tape and wrapping
- Containers which do not fully eject their contents can lead to cross contamination through product mixing
- Poor dispensing equipment design results in product failure

*Production line damage can be avoided by good container design!*



### Inefficient use of transportation

- Fuel costs are rising at an alarming rate
- Non-collapsible containers dramatically increases the number of return journeys
- A stack of 2 large boxes provides a greater volume than a stack of 3 smaller boxes
- Reduced movements result in lower operating costs and CO2 footprint

*Don't transport fresh air!*



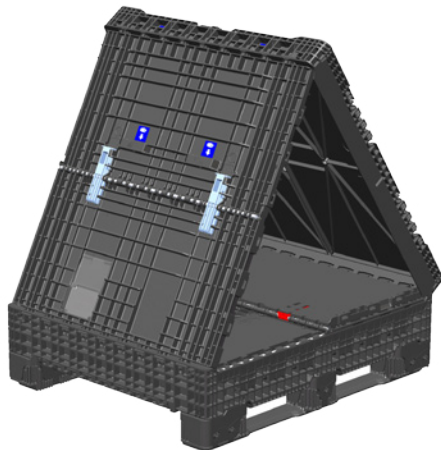
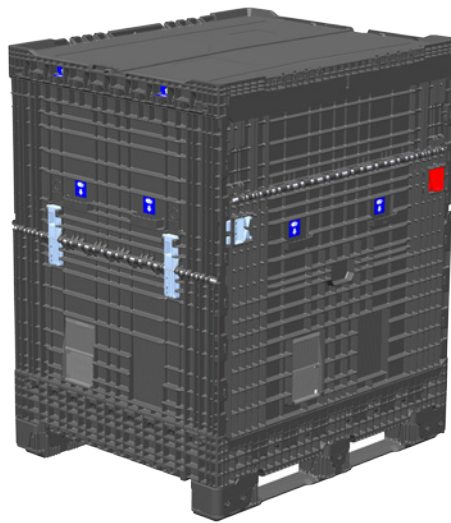
## Cost saving by design...

- ✓ eliminate production line contamination
- ✓ rapid assembly monolithic construction
- ✓ efficient supply chain space utilisation
- ✓ designed for in line automation
- ✓ one touch replenishment

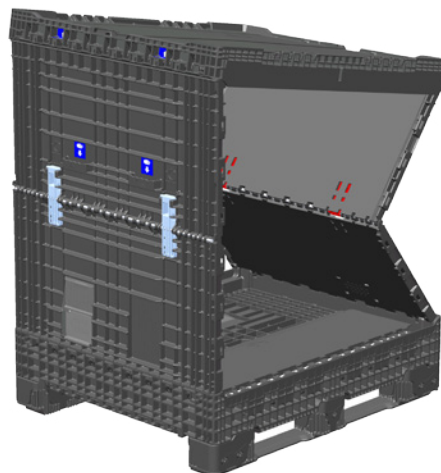
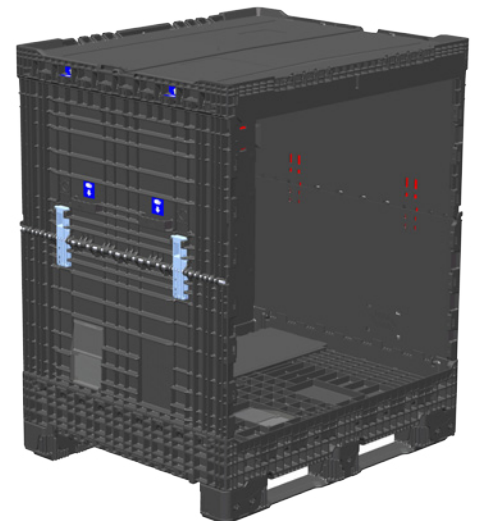
*from this*



*to this*



*in less than 30 Seconds*



# One modular box for all applications

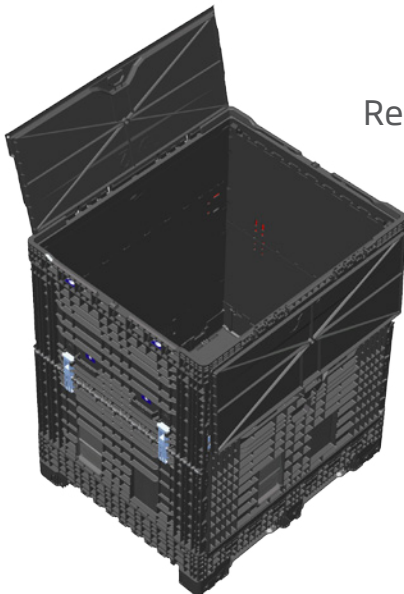
## Security

Tamper proof and tamper evident features



## Integral Liner Seal and Re-seal

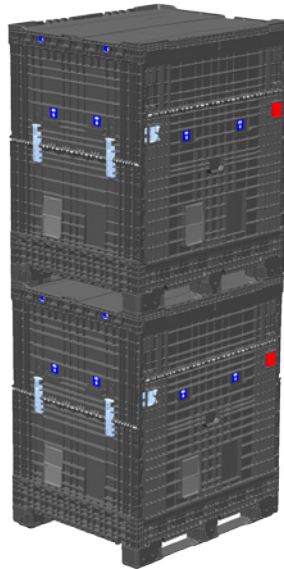
The integral liner seal and re-seal mechanism in the hinged lid eliminates the use of string and tape - ideal for controlled closure dispensing



## Designed to reduce forklift truck (FLT) damage

No centre foot and chamfered skid and leg blocks help minimise container damage

## Transportation

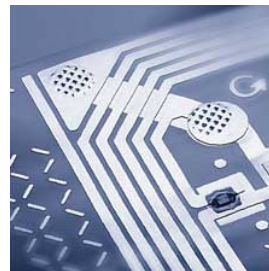


## Maxi or Compact

Available in two standard sizes to optimise distribution transport

## Integral Lid

Reduces lid damage and losses



## RFID Tags

Passive or active, fixed or transferable tag options

## One Man Operation

Easy clip functions and pull handles for single operator fold down and build



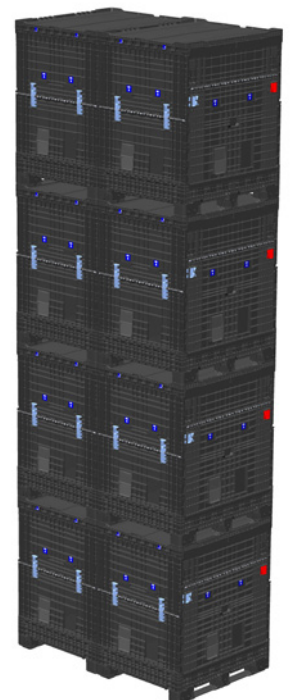
Return journey  
7 = 2.71m  
high vehicle

## Safety Factors

Eliminate the use of knives, wooden splinters and fibre debris

## Trap-free Surfaces

Streamlined inner surface so the products are fully ejected from the container with or without a liner





# Dispensing systems

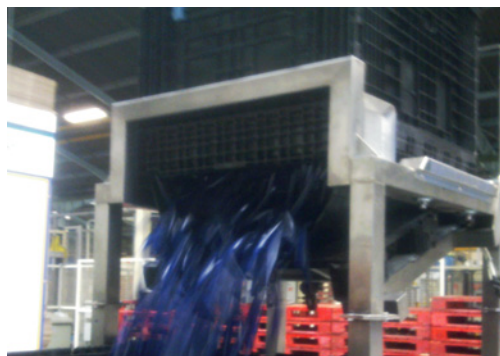
## Controlled Dispensing

- Contents can be dispensed at a controlled rate
- On demand dispensing eliminates “run out” delays for fast efficient product changes
- Fully automated dispensing eliminates manual handling tasks / risks of contamination
- Air activated stainless construction for maximum cleanliness and hygienic operation
- Easily integrated into existing hopper, elevator, conveyor, or blown delivery systems
- System compatible for use with liners for the most stringent of hygiene applications
- Chute locates directly over existing hopper and can dispense a wide range of item sizes.



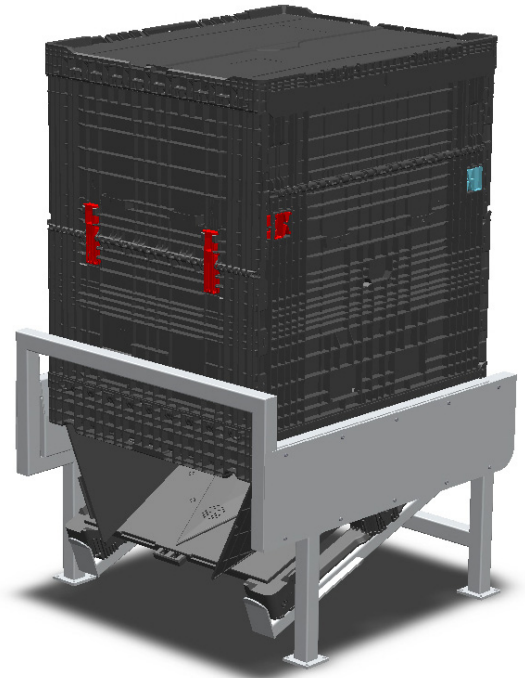
## Bulk Dispensing

- Side chute technology eliminates hopper contamination from falling debris, by directing contents beyond the container base
- Smooth internal walls eliminates trap points
- 100% discharge eliminates residual waste and potential cross contamination
- Easily and quickly integrated into existing hopper/elevator delivery systems.

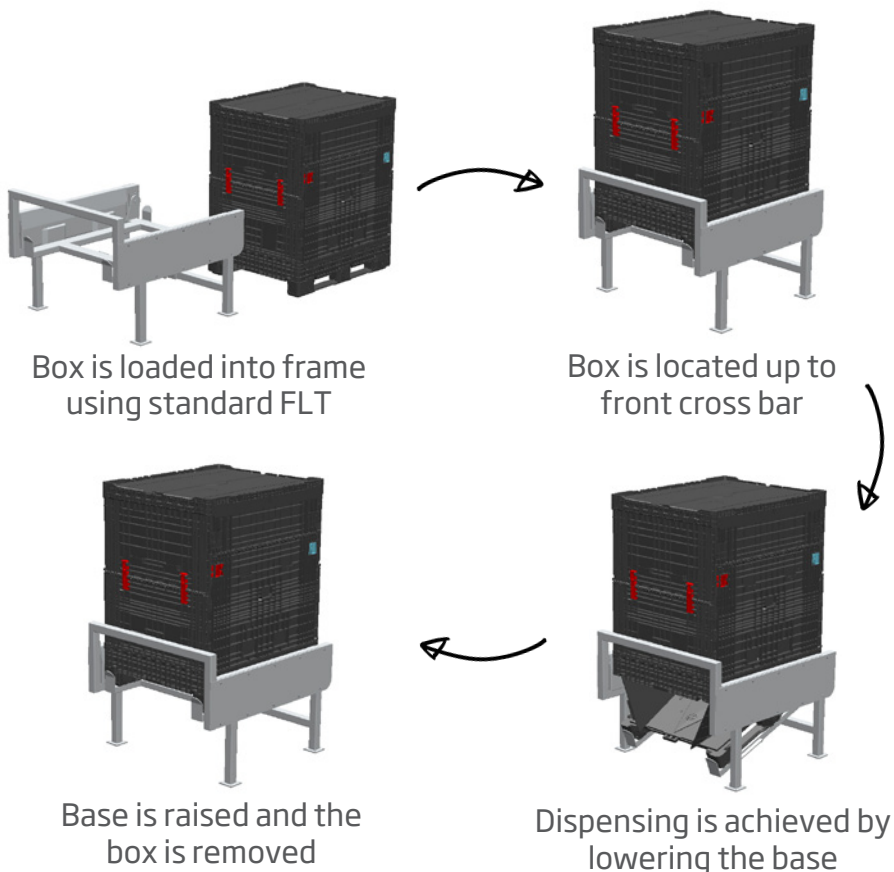


## Base dispense frame

- ✓ Bulk dispense from the integrated side chute in the container base
- ✓ Side chute technology eliminates hopper contamination from falling debris, by directing contents beyond the container base
- ✓ Fully automated, hygienic operation
- ✓ Can be used with or without a liner (vacuum retention of bag)
- ✓ Effective discharge eliminates residual waste and potential cross contamination
- ✓ Compatible with both Stackabox Compact and Maxi
- ✓ Multiple containers can be dispensed in sequence



## Dispensing sequence



For clarity all guarding has been removed from operational images.  
Frame is supplied with a declaration of incorporation and an instruction manual

## Top dispense frame

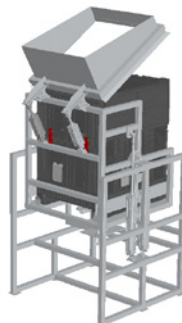
- ✓ Bulk tip dispense a wide range of products types/sizes
- ✓ Easily and quickly integrated into existing hopper/ elevator delivery systems
- ✓ Fully automated, hygienic operation
- ✓ Can be used with or without a liner (vacuum retention of bag)
- ✓ Effective discharge eliminates residual waste and potential cross contamination
- ✓ Compatible with both Stackabox Compact and Maxi
- ✓ Multiple containers can be dispensed in sequence



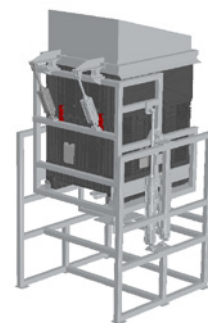
## Dispensing sequence



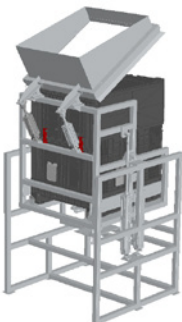
Box is loaded into frame using standard FLT



Box loaded in frame



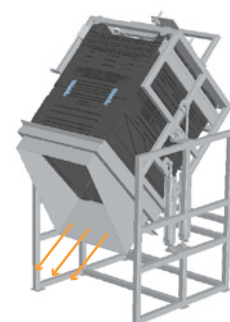
Hood is closed and vacuum system is raised



Hood is opened and vacuum system is lowered



Box rotated to start position



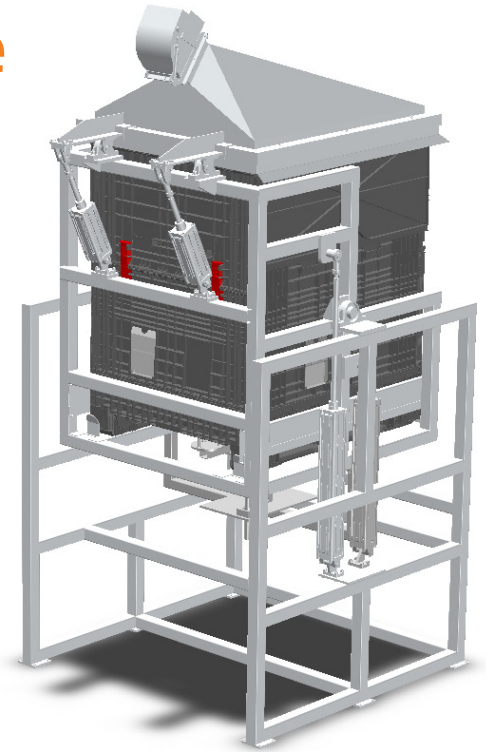
Box is rotated into dispense position

For clarity all guarding has been removed from operational images.  
Frame is supplied with a declaration of incorporation and an instruction manual

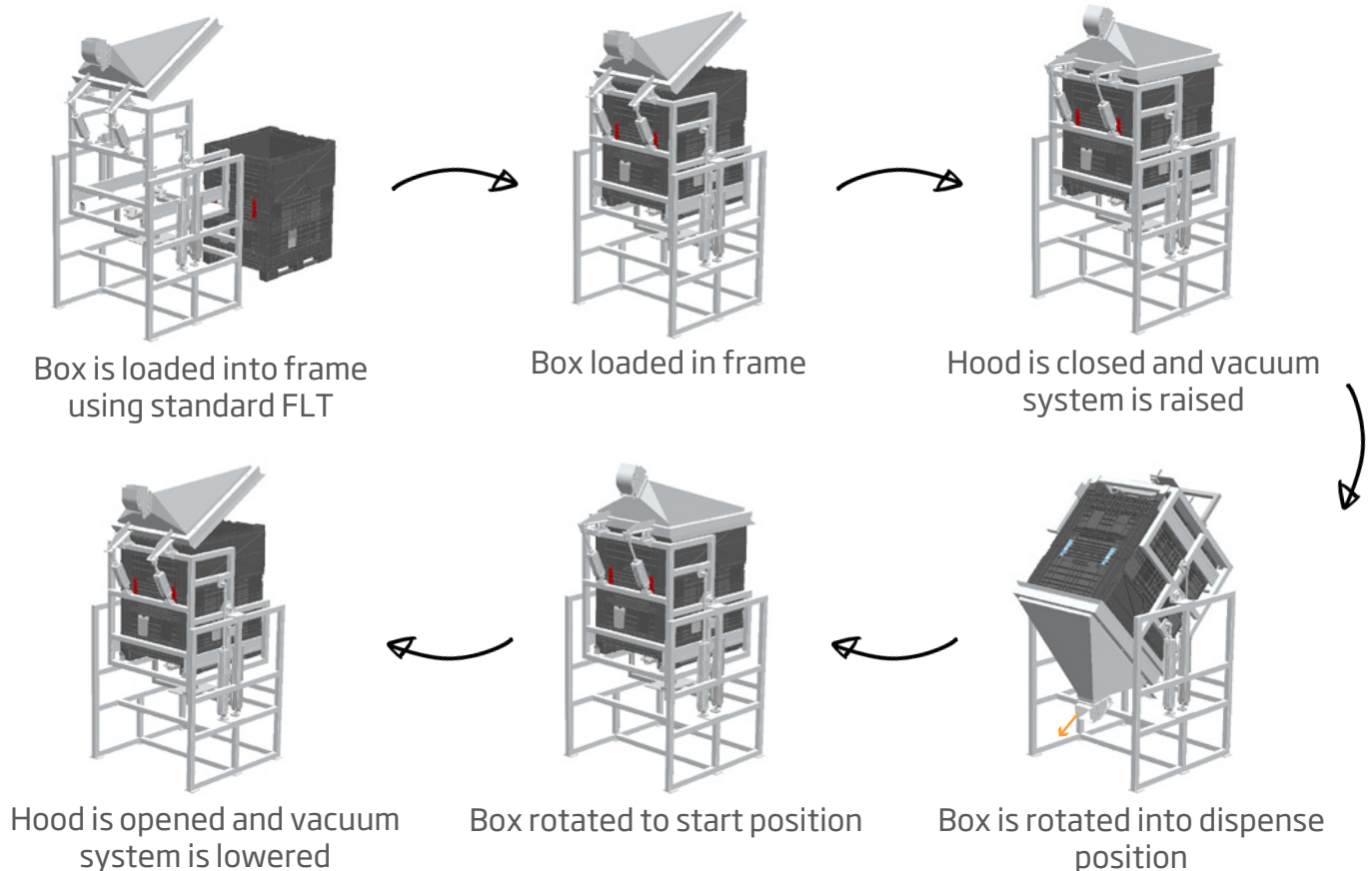


## Controlled top dispense frame

- ✓ Restricted product flow permits controlled dispense
- ✓ On demand dispensing eliminates 'run out' delays for efficient line change overs
- ✓ The ability to partially discharge the contents of a box, allows greater flexibility on limited production runs
- ✓ Fully automated, hygienic operation
- ✓ Can be used with or without a liner (vacuum retention of bag)
- ✓ Effective discharge eliminates residual waste and potential cross contamination
- ✓ Compatible with both Stackabox Compact and Maxi

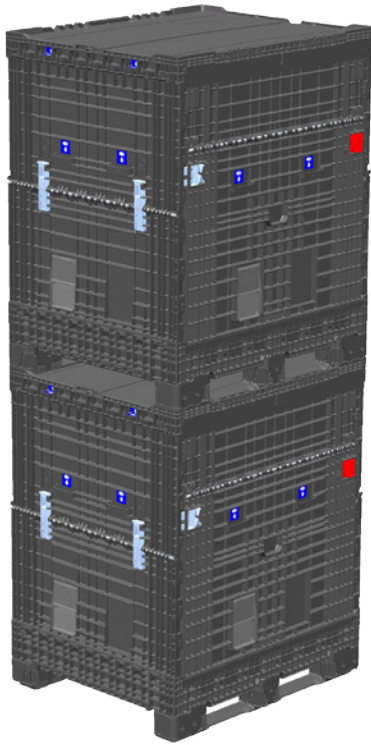


## Dispensing sequence

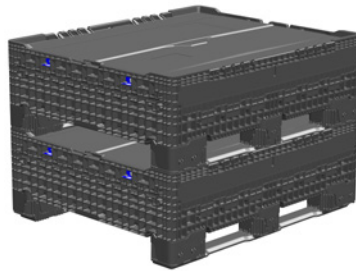


For clarity all guarding has been removed from operational images.  
Frame is supplied with a declaration of incorporation and an instruction manual

## Technical Information



Monolithic assembly  
folds to less than  
28% of original  
volume\*



### Maxi\*

Overall Height:	1455mm (57.3")
Base Dimensions:	1206 x 1006mm (47.5" x 39.6")
Volume:	1350 litres (357 gal (US))
Fold Down Height:	410mm (16.1")
Tare Weight:	78Kg (165lb)
Max Gross Payload:	500Kg (1102lb)
Material:	Polypropylene (PP)
DIN Standard:	110mm fork entry (4.33")

### Compact

Overall Height:	1155mm (45.5")
Base Dimensions:	1206 x 1006mm (47.5" x 39.6")
Volume:	1030 litres (272 gal (US))
Fold Down Height:	410mm (16.1")
Tare Weight:	66Kg (145lb)
Max Gross Payload:	500Kg (1102lb)
Material:	Polypropylene (PP)
DIN Standard:	110mm fork entry (4.33")

## Get in touch...



Plastics Division  
Rigid Packaging Group  
Madleaze Industrial Estate  
Bristol Road  
Gloucester  
GL1 5SG



Tel: +44 (0)1452316565  
Fax: +44 (0)1452502828



[sales@dssreplen.com](mailto:sales@dssreplen.com)



[www.dssmith.com/plastics](http://www.dssmith.com/plastics)  
[www.first4boxes.com](http://www.first4boxes.com)